

Stay Well and Steadfast

#CatholicCares

#ProvidenceCares



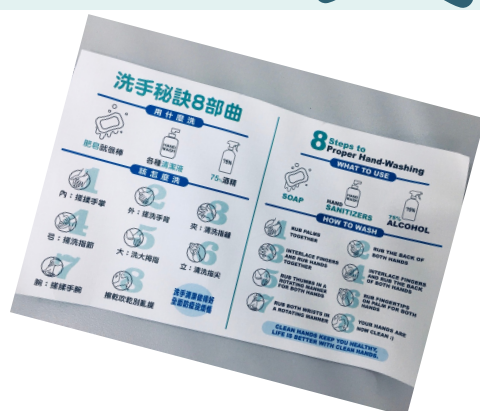
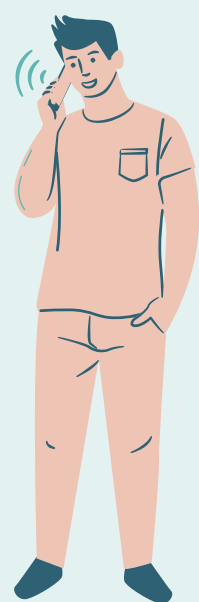
Amid all the disruption and dismay caused by COVID-19 around the globe, we're very thankful that schools are still fully operational in Taiwan.

Here are several measures to keep a safe and reassuring campus here at Providence.

Assisting Healthcare

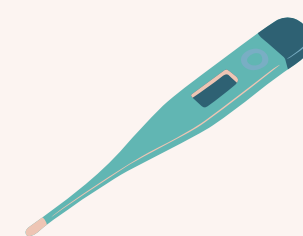
PU launched a community campaign to dispense 20,000 health packages not only in the school but also in the neighboring communities.

(Each package includes one unit of hand sanitizer, tissue wipe, sanitizer gel, and a piece of note full of important tips to boost people's health awareness.)



Student Affairs

- (1). PU established a COVID-19 response web page to provide timely announcements.
- (2). Only PU faculties and students are permitted to enter the campus until further notice.
- (3). All PU faculties and students are mandated to put on masks on campus.
- (4). Temperature is measured at In-fray entry checkpoint and by swiping ID card the data binds with the ID. People with temperature under 37.5 °C may enter.
- (5). Students may ask for an isolation leave by showing official notice/text from the government.
- (6). Counseling and emotion support hotline is available during the day.
- (7). Activity size should not exceed 100 people.



Supporting Online Learning

PU provides online courses for students who cannot enter Taiwan due to travel restriction, and also for those under mandatory home isolation/quarantine.

Full-scaledistant learning option is on reserve just in case.



Spiritual Resources

School chapel remains open while seat spacing and entry sterilization protocol is put to practice.

People from off-campus may enter on request by giving a clear travel history survey.

